

Preventivni Veterinarni Prace v Chovech Skotu-Nitra 16.5.2013



MVDr. Ondřej Bečvář, MS

Veterinární léčebná a preventivní činnost pro mléčné a masné chovy skotu

Hadrava 18, Nýrsko, 34022, ČR, becvarondrej@gmail.com

Production Management Medicine

College of Veterinary Medicine, Virginia Tech, Blacksburg,
Virginia, USA

- PMM



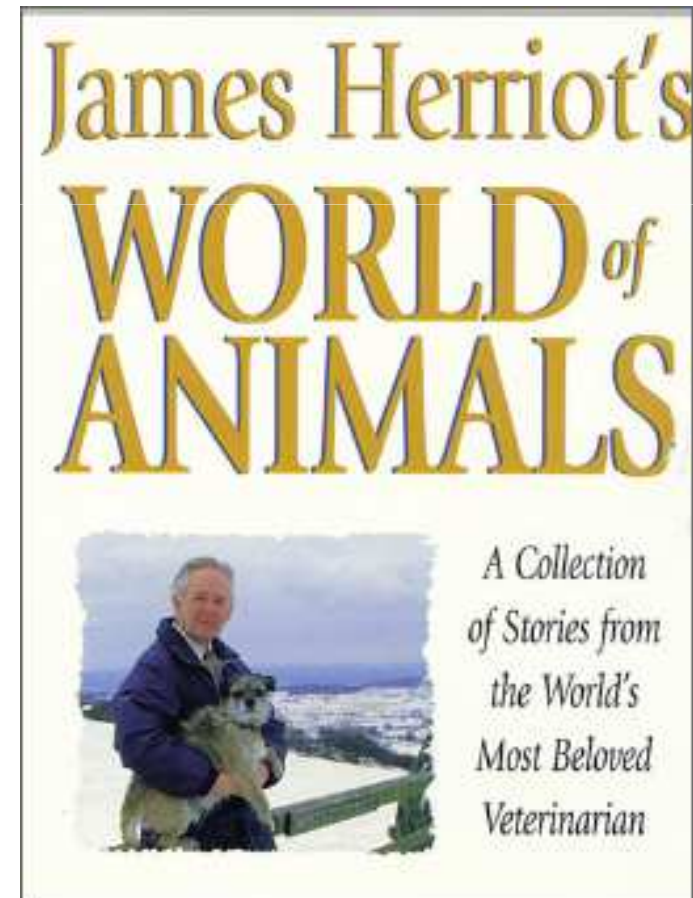
Plan

- Evoluce veterinarniho servisu
- Zmena pozadavku na veterinarni servis- jak motivovat veterinarniho lekare k preventivnimu servisu
- Prevence- oblasti zajmu
- Legislativa (Veterinarne-klientsky vztah)

Role veterinararnihov lekare v modernih podminkah chovu skotu

1. Evoluce veterinararnihov servisu

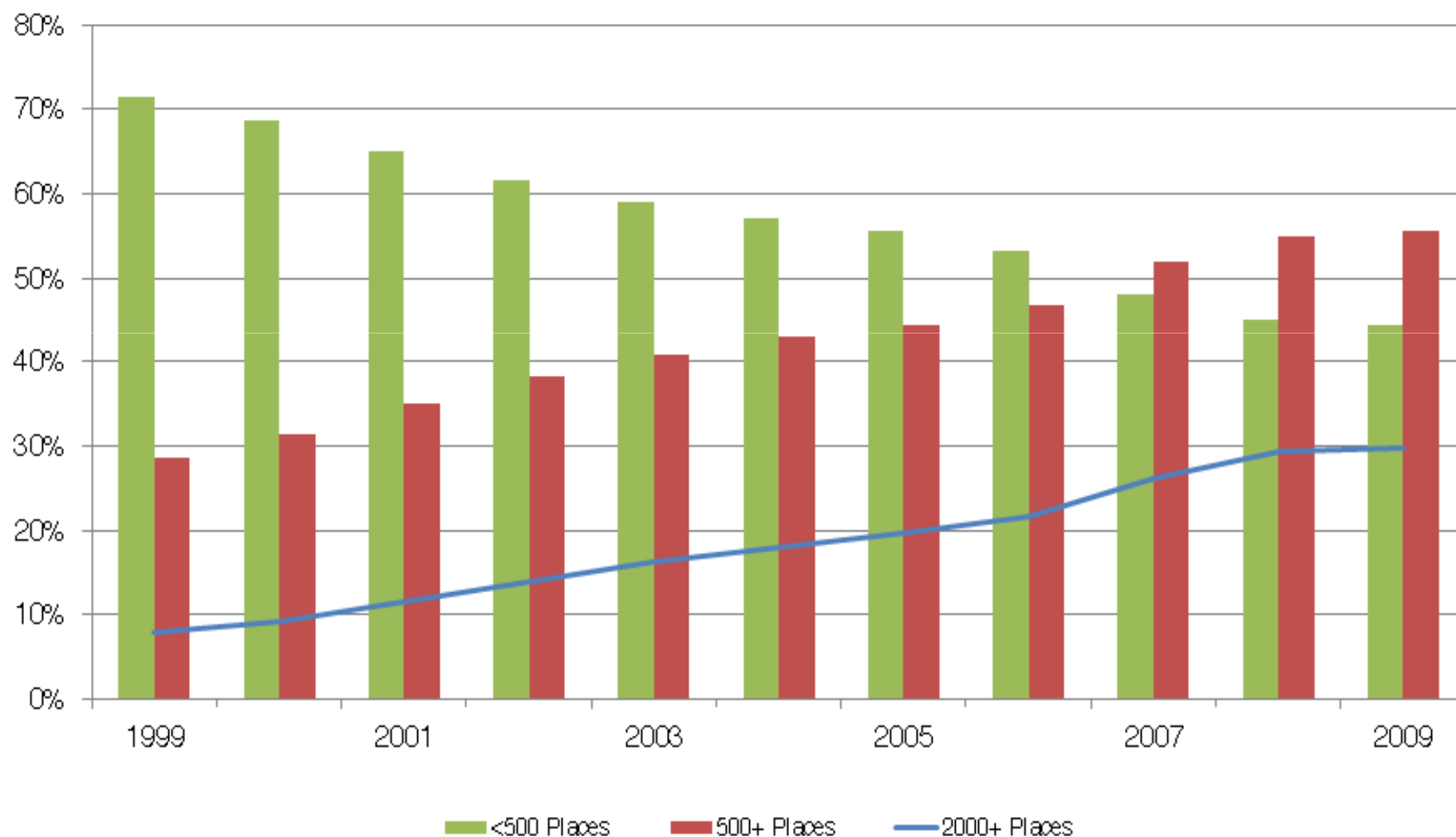
- Tradicni x Moderni



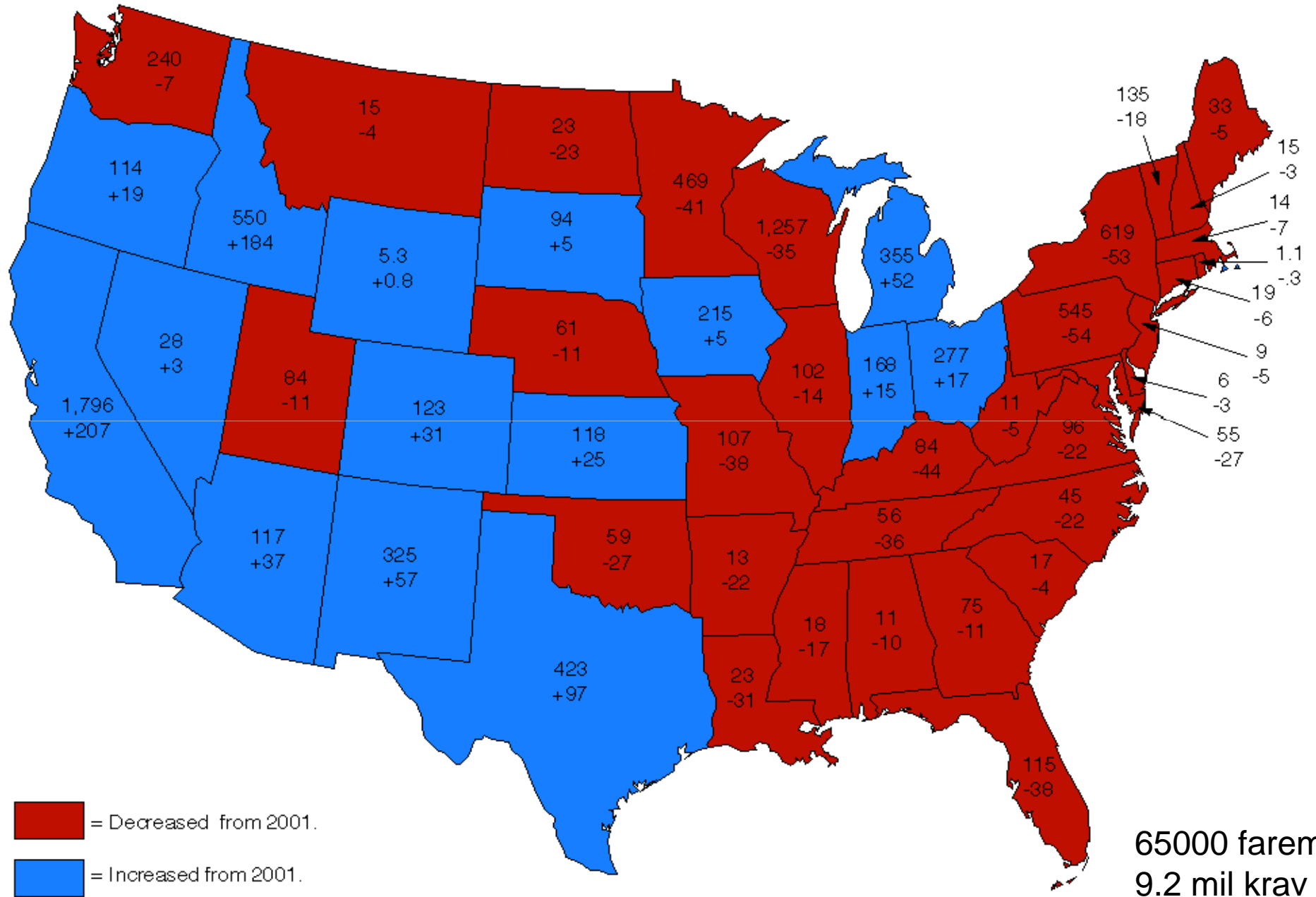


Graph 4. Milk Cow Inventory Distribution - United States

Percent of total



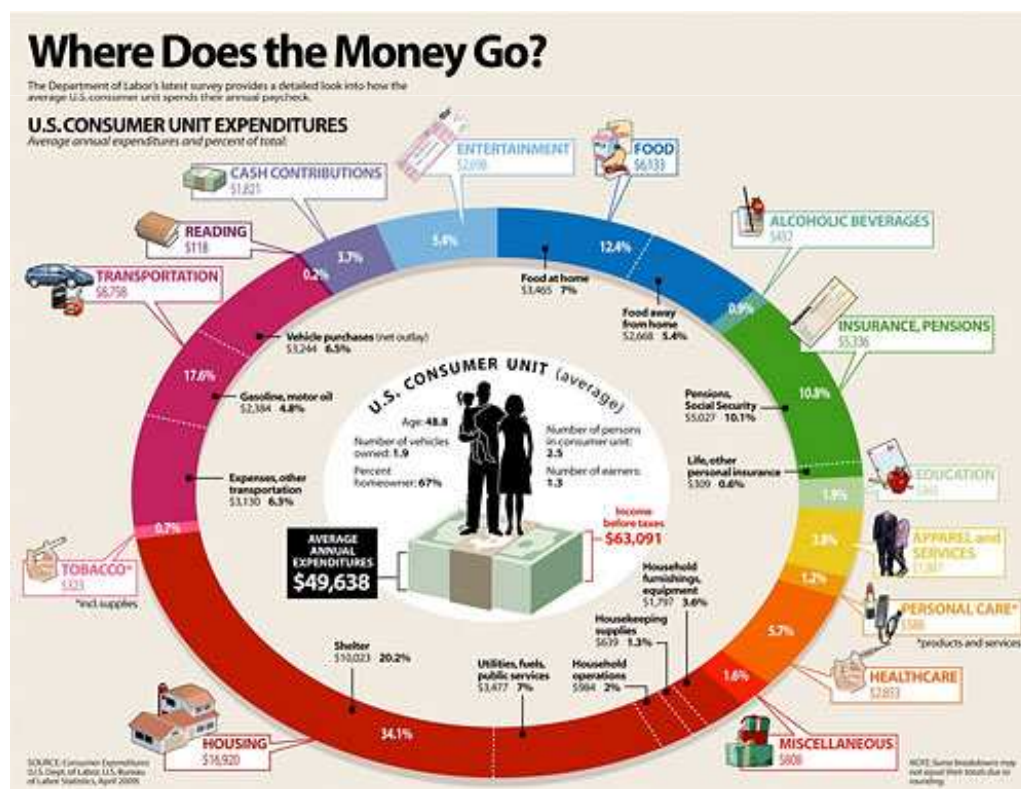
Graph 10. Milk Cow Inventory - United States: 2009 and Change from 2001 (1,000 head)



65000 farem
9.2 mil krav

Klicem k snizovani nakladu na produkciji je PRACOVNI EFEKTIVITA

- Naklady na jidlo vyjadrene procentem z prijmu domacnosti



2. Zmena pozadavku na veterinarni servis- jak motivovat veterinarniho lekare k preventivnimu servisu

- Zarazeni veterinare do management tymu farmy
- Vypocet veterinarnich nakladu na litr mleka za stanoveni brakacnich a produkcnich kriterii
- System ohodnoceni veterinarniho servisu



31 Euro/hod (us 92 Euro/hod)
RDG 80 krav/hod
0.38 E/kravu.....2Euro



3. Prevence- oblasti zajmu

- Reprodukce
- Zdravi mlecne zlazy a kvalita mleka
- Vyziva/krmeni



4. Legislativa vztah- veterinar x klient

- Predepisovani **protokolu (schematu)** lecbby
 - Diagnostika
 - Lek
 - Davka
 - Zpusob podani
 - Delka podani
 - Ochranné lhuty
 - Kontrola efektu lecbby
 - Evidence aplikovanych leku

Klasifikace leku v US (FDA- AMDUCA, ELDU)

- Volne dostupne
- Na predpis
- Aplikovane mimo doporučení na pribalovem letaku
- Nelegalni (zakazane)

